



## The Commonwealth Care Health Insurance Program

(Commonwealth Care) is run by the Health Connector. It connects eligible Massachusetts residents with approved health plans and helps them pay for them.

Commonwealth Care is an insurance program for uninsured individuals with incomes that fall within certain guidelines and who meet other qualifications.

With Commonwealth Care, you choose a health plan and you choose your own doctor. The benefits of Commonwealth Care include regular check-ups, treatment when you are sick or injured, prescriptions at your local pharmacy, vision care, mental health or substance abuse treatment, and, for some members, dental care. Commonwealth Care plans are offered by Boston Medical Center (BMC) Health Net Plan, Neighborhood Health Plan and Network Health.

*The following is a list of Milton Hospital primary care physicians who are currently accepting new patients, and accept some or all of the insurance carriers offering Commonwealth Care plans.*

*Updated: Nov. 13, 2009*

*For additional copies, please contact the Milton Hospital Public Relations Department, 617-313-1557*



**Ali Emami, MD, Internist**

100 Highland Street, Suite 209, Milton MA

Phone: 617-696-0302

Accepts most major insurances, including Masshealth and Commonwealth Care

Hours: Mon.-Fri. 9am-5pm



**Perry Hearn MD, Family Practitioner**

99 Longwater Circle, #100, Norwell, MA

Phone: 781-681-5061

Accepts most major insurances, including Commonwealth Care, EXCEPT Masshealth

Office Hours: Mon-Thurs: 9am - 7:45pm, Fri.: 9am - 4:45pm

For Dr. Hearn: Mon., Tues., Thurs., Fri. 9am-4pm, Wed. 9am-12pm



**Brian Kenny, MD, Internist**

1261 Furnace Brook Parkway, Suite 22, Quincy, MA

Phone: 617-479-6333

Accepts most major insurances, including some Commonwealth Care products, EXCEPT Masshealth

Hours: Mon.-Fri. 9am-5pm

**See Page 2 for additional Milton Hospital physicians accepting Commonwealth Care products.**



**Jeremiah J. Lowney, DO, Internist**

Lowney Medical Associates, 1234 Hyde Park Avenue, Hyde Park MA

Phone: 617-364-2420

Accepts most major insurances, including Masshealth and some Commonwealth Care products

Hours: Tues. and Thurs. 8:30am-7pm, Mon., Wed., Fri. 8:30am-5pm



**Shaheen H. Mian, MD, Internist**

100 Highland Street, Suite 201, Milton, MA

Phone: 617-696-5118

Accepts most major insurances, including some Commonwealth Care products,

EXCEPT Masshealth

Hours: Mon. - Fri. 9:30am-4:30pm



**Susan Milliken, DO, Internist**

32 South Main Street, Randolph MA

Phone: 781-986-8039

Accepts most major insurances, including Commonwealth Care

Hours: Mon. and Fri. 8:30am-2pm, Tues., Wed. and Thurs. 7:30am-2pm



**Khang Nguyen, MD, Internist**

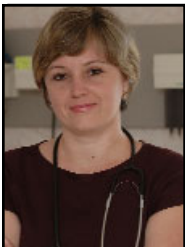
32 South Main Street, Randolph MA, Phone: 781-963-3082

100 Highland Street, Suite 105, Milton MA, Phone: 617-698-6980

Accepts most major insurances, including Masshealth and Commonwealth Care

Hours: Milton: Mon 9am-12pm, Thurs 9am-4:30pm

Randolph: Tues. 10:30am-7pm, Wed. 10am-5pm, Fri. 9am-4:30pm



**Marta Onyskiv, MD, Family Practitioner**

32 South Main Street, Randolph MA

Phone: 781-986-9845

Accepts most major insurances, including Commonwealth Care, EXCEPT Masshealth

Hours: Mon. - Thu. 8am-4pm

Your office visit is scheduled with: \_\_\_\_\_  
*PHYSICIAN NAME*

The date and time of your appointment is: \_\_\_\_\_  
*DATE / TIME*

Updated: Nov. 13, 2009

For additional copies, please contact the Milton Hospital Public Relations Department, 617-313-1557